



# Communities for Children

Inala to Goodna

## Background and Information

### Summary of Strategies and Activities

#### **Inala to Goodna Communities for Children Initiative**

*The Inala to Goodna Communities for Children (C4C) Initiative is a 4-year, initiative funded by the Australian Government under the Stronger Families and Communities Strategy and facilitated by Mission Australia. It is focused on children 0 to 5 years living in the suburbs of Inala Durack, Richlands, Carole Park, Wacol, Gailes and Goodna, their families and their community, and aims to give children a better start in life.*

*The Initiative is working together with community, government and business sectors, developing partnerships and building on community strengths, cultural diversity and community assets to establish activities that create Child Friendly and Child Safe communities which foster and enhance learning, skills building, literacy, social skills, health and well being of children, families and services.*

**For further information about the Inala to Goodna C4C Initiative, contact:**

Communities for Children – Inala to Goodna  
Phone: 07 3271 5607 / Fax: 07 3271 5493 / Mobile: 0407 277 745  
E-mail: [chavesj@missionaustralia.com.au](mailto:chavesj@missionaustralia.com.au)  
[c4cinalagoodna@missionaustralia.com.au](mailto:c4cinalagoodna@missionaustralia.com.au)  
Website: [www.mac4c.com.au](http://www.mac4c.com.au)

## **EXECUTIVE SUMMARY**

### **Overview of Region**

The Mission Australia, Inala to Goodna, Communities for Children site, is located on the South Western fringe of two major Local Government areas in Queensland (Brisbane City Council and Ipswich City Council) and two State Government Regional Districts (Brisbane South and West Moreton). The Inala to Goodna Communities for Children Initiative encompasses the seven localities of Inala, Durack, Richlands, Carole Park, Wacol, Gables and Goodna.

Services for families and children tend to be focused in pockets of the region with other localities experiencing significant isolation - having limited services, resources and community infrastructure. The region is identified as one of the most disadvantaged in Queensland, with high public housing density, high levels of unemployment, low income levels and limited transport services. The main Queensland corrective centres for adult males, women and youth are based within the region. Localities are isolated by major motorways (Logan and Ipswich) and a number of industrial thoroughfares. A high level of cultural diversity exists in this region with the most significant populations being Aboriginal and Torres Strait Islander, Vietnamese and Pacific Islander communities.

While demographic socioeconomic disadvantage indicators identify this region as one of the most disadvantaged in Queensland, the Communities for Children Initiative aims to build on strengths identified from its consultations and engagement with the community, to provide integrated universal responses for 0 to 5 year old children and their families.

### **VISION**

***To Facilitate the Development of Child Friendly Communities that are Collaborative, Co-operative and encourage Partnerships by Supporting and Building upon Innovative Strategies which Nurture Children, Families and Neighbourhoods.***

The vision will assist in the development of “The Inala to Goodna Child Friendly Pathway” as a conceptual and physical link connecting suburbs, individuals, groups and services across the site, aimed at working together to create a better future for children in the Inala to Goodna region. All initiatives existing along this pathway and promoting the vision will build the capacity of the community by

- Participation and inclusion- engaging all services, groups, stakeholders, families and children in participation and decision making- recognising that greater participation can lead to better solutions and outcomes.
- Undertaking a holistic approach and acknowledging the interdependence and relations existing between groups within the community and more broadly between communities and the wider region, national and global contexts.
- Acknowledging and working with the diversity within the region including the identification and establishment of inclusive, culturally, linguistically appropriate practices, training and resources.
- Being responsive and recognising the value in working in an evolving, adaptive and flexible manner to better meet the needs of young children and families.
- Building sustainability by promoting community ownership of initiatives, leveraging support and developing partnerships across sectors and the development of knowledge, skills and confidence which are transferable to other initiatives and remain as human and social capital within the region.

### **Strategies**

Five major strategies have been developed in response to community consultations, and in line with the priority areas and outcomes identified in the National Agenda for Early Childhood, FaCSIA guidelines and a comprehensive review of early childhood literature. Strategies will build upon, strengthen and enhance already existing infrastructure including services and interagency networks within the region. All strategies interlink and complement each other, are designed to meet the identified needs of young children 0-5 and their families and will develop cross sector partnership, as leverage for the development of sustainable outcomes. The strategies include –

1. Growing and Nurturing Healthy Children and Communities- will build upon, strengthen and enhance already existing programs in the region, around early years health and wellbeing, infant mental health, antenatal/postnatal interventions and approaches to nutrition and physical activities for children 0-5 with a particular focus on the regions indigenous and culturally diverse population.
2. Strengthening Families Strategy; will focus on an integrated, coordinated approach to parent education in the region by building and enhancing the capacity of families through innovative and community specific approaches.

3. Healthy Integrated Early Childhood Settings Strategy: A comprehensive integrated program building coordination and shared resourcing across early childhood environments and the establishment of activities that promote early learning, literacy, language and social skills in early childhood settings.
4. Creating Child Friendly Communities Strategy – is an integrated, whole of region approach focusing on the development of a long term vision to build and assist the community's capacity to create a more child friendly region.
5. Regional Partnerships- Service Integration Strategy will develop an integrated, coordinated continuum of services within the community, government and business sectors. This strategy underpins all actions identified within the current Community Strategic Plan, by further enhancing the regions capacity to work effectively as a system and strengthen existing networks, partnerships and interagency forums.

### Literature Supporting Strategies

The strategies are supported by evidence incorporating themes around integrated, community driven approaches, the effects of early parent/child relationships, the importance of critical transition points in a child's life and the implementation of positive parenting strategies with a strengths based focus, utilising inclusive and culturally appropriate techniques.

"A key requisite for optimal child development is secure attachment to a trusted caregiver, with consistent care giving, support and affection early in life. A child's early years, adolescents, and ultimately, an adult's emotional health and habitual way of reacting to new situations have their basis in early relationships between infant/ toddler and people primarily responsible for his or her care" (*An Early Child Development Strategy for Australia – Lessons from Canada; Clyde Hertzman 2002; page 22*).

The development of children unfolds along individual pathways whose trajectories are characterized by continuities and discontinuities, as well as by a series of significant transitions...the developing child remains vulnerable to risks and open to protective influences throughout the early years of life and into adulthood. The course of development can be altered in early childhood by effective interventions that change the balance between risk and protection, thereby shifting the odds in favour of more adaptive outcomes (*'From Neurons to neighbourhoods' – The Science of Early Childhood Development, Shonkoff and Phillips, National Academy of Sciences 2000.*)

Research has identified that ethno specific approaches within childcare service delivery can improve child and family engagement to develop a supportive environment that enhances the future learning environments for children (*Child Care Issues Paper Fair Play-Fair Go, One Size Does Not Fit all – Seeking Best Practice models of inclusion in service delivery in a multicultural society, to improve access and participation of CALD families in child care and other services (Supporting Through Partnership Network QCOSS,2004.)* Best practice models that incorporate an inclusive multicultural approach that is focused on improving access and encouraged participation by multicultural families, ensures access and basic education rights as a citizen within society are formed (*Hard Labour – A review of Maternity Services for Women from Culturally and Linguistically Diverse Backgrounds in Qld. Real, 2004*)

An integrated and coordinated service systems approach based on collaborative partnering has been identified as providing a more appropriate and holistic approach for encouraging engagement between services and families (*The Early Years Project: Refocusing community based services for young children and families. A Literature Review 2003*) We must make sure when we speak of those early years that we keep on insisting on coalitions, partnerships, developing the social capital of healthy communities in order to ensure "Good Beginnings". The most powerful research suggests that the quality of family supports and networks, ready access to appropriate services and information can and does overcome many disadvantages of individual families; it shows up in later outcomes for children and adults. (*Early Childhood and Community, Dr Don Edgar, Keynote address for "Early Childhood Matters Conference" Dept of Human Services, Victoria, Monash University, Oct, 2002*)

### Expected Outcomes

Mission Australia will work in collaboration with the community, strengthening the service system and building community capacity. As a result, a range of corresponding outcomes are expected, including improved parent/child relationships, improved child physical health and development - particularly nutrition and physical activities, improved parenting competency and style, improved community interest and capacity to own and respond to early childhood issues, the development of communities inclusive of all families and cultures and improved co-ordination and partnering of services across all sectors to improve early childhood health, social and cognitive development, safety and well being.

A further outcome will be measuring the effectiveness and impact of initiatives as part of the National Evaluation Framework. The Inala to Goodna Communities for Children Initiative is working in collaboration with consultants to co-ordinate local evaluation activities to gain an understanding of 'What Works Best' to support

families and develop environments which are safe, secure and promote the healthy development of young children.

## **Sustainability**

Community capacity and sustained outcomes will be further developed by

- Utilising and encouraging existing community expertise, wisdom and participation from parents, community members and services in a range of community reference groups, forums and the C4C committee.
- The provision of training, education and skill-building activities, will result in the development of a pool of community based knowledge, resources, community mentors and enhanced skills for existing services and workers which will be transferred into the future.
- The development of integrated models of service provision and the building of a Early Years Regional Network will aim to place the focus firmly on the importance of the Early Years with a strong regional partnership of all stakeholders raising a unified voice - to ensure the ongoing importance of supporting Early Years initiatives remains on the agenda for government, non-government and business sectors.
- The development of collaborative relationships and shared practices will lead to the establishment of “traditions” that continue into the future
- As the facilitating partner, for six Communities for Children sites, Mission Australia will use its existing positive relationships with corporate Australia, local, state and commonwealth governments, to leverage support for sustained outcomes and initiatives for the Inala to Goodna C4C site.
- Using its existing infrastructure and expertise, Mission Australia will also build a knowledge base, resources, procedures and policies to assist in the operation and management of the Communities for Children Initiative to ensure ongoing success for the duration of the C4C initiative and beyond.

## **BACKGROUND**

### **Communities for Children Initiative**

The Communities for Children Initiative is part of the Stronger Families and Communities Strategy (SFCS) which takes a collaborative approach in seeking to achieve better outcomes for young children 0 to 5 years and their families.

The early childhood focus of Communities for Children has been guided by research and consultation undertaken for the development of the Australian Government's National Agenda for Early Childhood ([www.facs.gov.au/early\\_childhood](http://www.facs.gov.au/early_childhood)).

The Agenda recognises that effective early childhood intervention is not only about supporting young children, but also supporting their parents, neighbourhoods and the wider community. Under Communities for Children, Non-Government Organisations (NGOs) are engaged as 'Facilitating Partners' in 45 communities, or sites, around Australia to develop and implement a strategic and sustainable whole of community approach to early childhood development in consultation with local stakeholders. This model supports the development of partnerships between stakeholders, including different levels of government, service providers, community leaders, businesses and other early childhood stakeholders including parents.

Sites have been selected on the basis of a range of information including proportion of children in the community, number of families receiving Family Tax Benefits, consultations with State and Territory Governments and indicators of disadvantage such as the Australian Bureau of Statistics' Socio-Economic Indexes for Areas.

Communities for Children takes a community development approach to improving outcomes for young children and their families, incorporating key principles such as collaborative action, building on community strengths and contributing to family and community capacity building. It funds NGOs as 'brokers' or 'enablers' who cultivate community engagement in Communities for Children processes and commitment to achieving its outcomes, and build networks between early childhood stakeholders in the community.

The Communities for Children Initiative has identified five priority areas:

- healthy young families;
- early learning and development;
- family and children's services work effectively as a system;
- creating child-friendly communities; and
- supporting families and parenting.

### **Inala to Goodna Communities for Children (C4C) Initiative**

Mission Australia is the appointed Facilitating Partner for the Inala to Goodna Communities for Children (C4C) Initiative with funding of \$2 million for early childhood development initiatives over 4 years. Mission Australia will drive and facilitate the community development approach to improving outcomes for young children in the suburbs of Inala Durack, Richlands, Carole Park, Wacol, Gailes and Goodna.

The Inala to Goodna C4C Committee was established with broad representation from local organisations, consisting of Government, Non-Government, Facilitating Partner and Residents. The Committee facilitated the development of a four year Community Strategic Plan (available upon request) and annual Service Delivery Plans (also available upon request). Mission Australia manages the overall funding allocation for the site, including disbursement of most of this funding to other local services to deliver the activities identified in the Community Strategic Plan and Service Delivery Plans.

The development of the Inala to Goodna C4C Community Strategic and Annual Service Delivery Plans entailed a comprehensive planning phase which included:

- The development of a comprehensive community profile
- Mapping of existing and future (where known) services and projects
- Community consultation and engagement
- Review of current and past evidence.

The Inala to Goodna C4C Initiative has identified five key priority strategies, which together provide the community with a holistic strategic approach that allows for both a continuum of care and integration across projects. This blend of activities builds on all Stronger Families and Communities Strategy Priority Areas while providing a range of strategies for the community that are realistic and measurable. These are:

1. **Growing and Nurturing Healthy Children and Communities:** will build upon, strengthen and enhance already existing programs in the region, around early years health and wellbeing, infant mental health, antenatal/postnatal interventions and approaches to nutrition and physical activities for children 0-5 with a particular focus on the regions indigenous and culturally diverse population.
2. **Strengthening Families Strategy:** will focus on an integrated, coordinated approach to parent education in the region by building and enhancing the capacity of families through innovative and community specific approaches.
3. **Healthy Integrated Early Childhood Settings Strategy:** A comprehensive integrated program building coordination and shared resourcing across early childhood environments and the establishment of activities that promote early learning, literacy, language and social skills in early childhood settings.
4. **Creating Child Friendly Communities Strategy:** is an integrated, whole of region approach focusing on the development of a long term vision to build and assist the community's capacity to create a more child friendly region.
5. **Regional Partnerships- Service Integration Strategy:** will develop an integrated, coordinated continuum of services within the community, government and business sectors. This strategy underpins all actions identified within the current Community Strategic Plan, by further enhancing the regions capacity to work effectively as a system and strengthen existing networks, partnerships and interagency forums.

## VISION

*To Facilitate the Development of Child Friendly Communities that are Collaborative, Co-operative and encourage Partnerships by Supporting and Building upon Innovative Strategies which Nurture Children, Families and Neighbourhoods.*

The vision will assist in the development of "The Inala to Goodna Child Friendly Pathway" as a conceptual and physical link connecting suburbs, individuals, groups and services across the site, aimed at working together to create a better future for children in the Inala to Goodna region. All initiatives existing along this pathway and promoting the vision will build the capacity of the community by

- Participation and inclusion- engaging all services, groups, stakeholders, families and children in participation and decision making- recognising that greater participation can lead to better solutions and outcomes.
- Undertaking a holistic approach and acknowledging the interdependence and relations existing between groups within the community and more broadly between communities and the wider region, national and global contexts.
- Acknowledging and working with the diversity within the region including the identification and establishment of inclusive, culturally, linguistically appropriate practices, training and resources.
- Being responsive and recognising the value in working in an evolving, adaptive and flexible manner to better meet the needs of young children and families.
- Building sustainability by promoting community ownership of initiatives, leveraging support and developing partnerships across sectors and the development of knowledge, skills and confidence which are transferable to other initiatives and remain as human and social capital within the region.

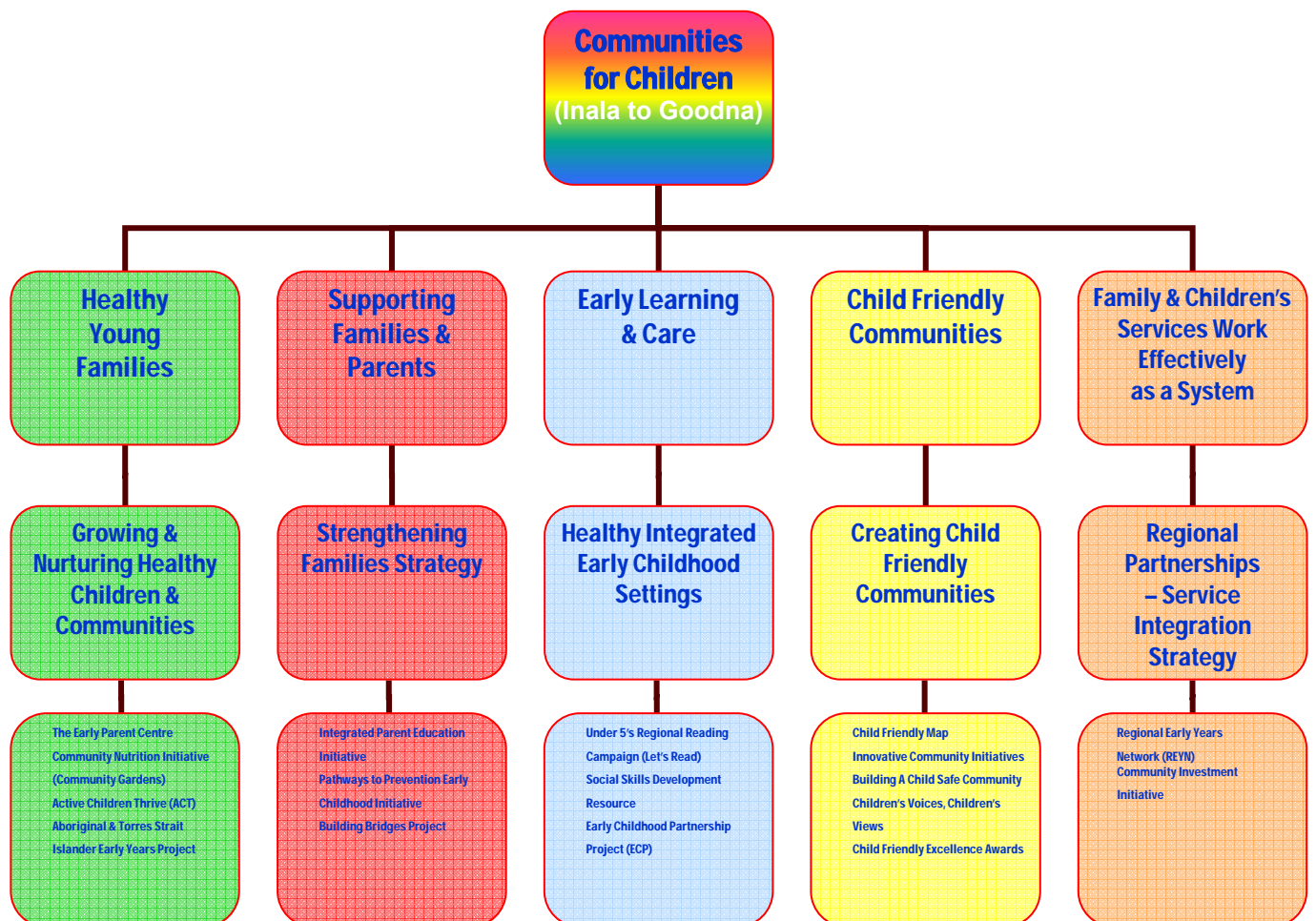
## Communities for Children Priority Areas and Outcomes

	<b>PRIORITY AREA</b>	<b>OUTCOMES</b>
√	Supporting families & parents	<ul style="list-style-type: none"> <li>√ Strong mother/child and father/child relationships.</li> <li>√ Improved parenting competence and style.</li> <li>√ Family Resources and capacity, including gaining employment.</li> <li>√ Improved Family functioning.</li> </ul>
. √	Children's services working effectively as a system	<ul style="list-style-type: none"> <li>√ Improved co-ordination of services to support the improvement in early childhood health, development and well-being.</li> </ul>
. √	Child friendly communities	<ul style="list-style-type: none"> <li>√ Communities inclusive of all families and cultures.</li> <li>√ Improved community interest and capacity to own and respond to early childhood issues.</li> <li>√ Community members, its facilities and institutions work together to improve early childhood health, development and well being.</li> </ul>
. √	Early learning & care	<ul style="list-style-type: none"> <li>√ Improved child cognitive development and competence.</li> <li>√ Improved child social emotional development.</li> </ul>
. √	Healthy young families	<ul style="list-style-type: none"> <li>√ Improved antenatal and postnatal.</li> <li>√ Improved child physical health and development, in particular, nutrition and physical activity.</li> </ul>

# Communities for Children

Inala to Goodna

## Summary of Strategies & Activities



# 1. Strategy: Growing and Nurturing Healthy Children and Communities

## Priority area: Healthy Young Families

**Outcomes:** Improved - Ante natal & post natal health, improved child physical health and development

**Overview:** This strategy will involve the establishment of multiple actions focusing on an integrated; strengths based approach targeting parents and children, pre-birth to age 5. The strategy will build upon, strengthen and enhance already existing programs in the region, working in partnership with both government and non-government services around early year's health and wellbeing, infant mental health, antenatal/postnatal interventions. Opportunities will also be provided to enhance the capacity of parents to provide safe, stimulating environments for their children, the development of approaches to nutrition and physical activity for children 0 to 5, and the promotion of cognitive and social development. The strategy will ensure approaches are inclusive and culturally appropriate with particular focus on the regions Indigenous and Culturally and Linguistically Diverse population.

### Activities will include:

#### The Early Parent Centre

- Building upon existing infrastructure to develop an early parent centre which will act as a hub for community services and networks to work in coordination to deliver services and improve parenting and relationship skills of new and young parents. The centre will act as a link to parents with existing services, creating greater support systems for parents via mentoring and education, a peer support system, and raising the awareness among parents, services and the community on the importance of the early years.

#### Community Nutrition Initiative – Inala Community Gardens

- A community nutrition initiative, using the concept of the community garden as a vehicle to engage parents and young children, early childhood services, preschools/schools, families, community services as a platform for improved access to better nutrition and healthy activities and to provide an alternative and positive early learning environment, foster neighbourhood ownership and connectedness and improve food security.

#### Aboriginal & Torres Strait Islander Early Years Project

- Enhancing the capacity of Aboriginal and Torres Strait Islander parents/carers to provide safe, secure and healthy environments for their babies and children up to 5, by using existing indigenous specific activities and services, as a platform to engage and promote health, safety and injury prevention education and the development of a peer support/mentoring initiative.

#### ACT- Active Children Thrive

- The development of a regional campaign around fun, healthy activities for children 0 to 5 to enhance their long term developmental outcomes. This will include physical activity and healthy eating programs as well as education and training of families, community members and services to ensure the sustainability of the activity.

**Links to other strategies** While this strategy links with all other strategies -it particularly connects with the Strengthening Families strategy in relation to using parent education services and the community parent volunteer activity, and the Service integration and Regional partnerships given its emphasis on coordinated, linked and integrated service provision and partnerships.

**Duration:** 2005 – 2009

**Target:** Children 0-5yr and Families, a wide range of community and government services (particularly focused on early years health and development), Indigenous and CALD community.

## 2. Strategy: Strengthening Families Strategy

### Priority area: Supporting Families and Parents

**Outcomes:** Strong Parent Child Relationships, Improved - parenting competence and style, family resources and capacity and family functioning

**Overview:** The Strengthening Families Strategy will focus on an integrated approach to Parent Education in the region. This will include working together with existing parent education providers, community and services to develop and implement activities including:-

#### The Integrated Parent Education Initiative

- Implements innovative and integrated approaches to the development and delivery of education programs for parents/carers and service providers in the Inala to Goodna region.
- The initiative will also develop and distribute a monthly 0-5 calendar to parents/carers and service providers in the region to promote educational programs, events and regular group activities.

#### Building Bridges Project

- Building and enhancing the capacity of parents and carers from geographically isolated areas which require significant services and resources – to participate and engage in education activities.
- To enhance family functioning, parental confidence and access to resources and mentoring support targeting parents, grandparents and carers with opportunities for participants to become volunteer community facilitators in the wider community.

#### Pathways to Prevention Early Childhood Initiative

- *The Pathways to Prevention - Early Childhood initiative* includes both Playgroups and Parent/Carer Support Groups recognising the need for carers as well as children to be nurtured within a supportive environment both inclusive and exclusive of their children in order to gain the best possible outcomes for children. This activity will build upon the existing playgroups and family support groups operating - acknowledging the importance of working with culturally specific groups e.g. Indigenous, Vietnamese, Tongan, Samoan and multicultural playgroups and family support groups.

**Links to other strategies** While this strategy links with all other strategies it particularly connects with the Growing and Nurturing Healthy Children and Communities strategy particularly in relation to parent education activities and the community parent volunteer activity, The Child Friendly Communities Strategy given the importance of developing Family friendly information and the Service integration and Regional Partnerships Strategy, given its emphasis on coordinated, linked and integrated parent education and facilitator training programs across the region.

**Duration:** 2005 – 2009

**Target:** Children 0-5yr and families, community and family services, CALD and indigenous community

### **3. Strategy: Healthy Integrated Early Childhood Settings**

#### **Priority area: Early Learning and Care**

**Outcomes:** Improved child cognitive development and competence, improved child social/ emotional development

**Overview:** This strategy focuses on the development of a comprehensive integrated program for staff, parents/carers and children in early childhood environments, including childcare centres, Family Day Care schemes, limited hours/Occasional care, Playgroups and Preschools/Prep. The strategy will also focus on the establishment of activities to promote early learning, in particular an emphasis on early language and literacy skills. Services are keen to develop a cross-centre/service collaborative partnership with a focus on activities including:-

#### **In Good Hands - Social Skills Project**

The further development of a practical social skills resource manual and training based on a strengths based, consultative approach. The resource will be used by early childhood environments and parents/carers and will be produced in a flexible format which can be built on with new information and updates

#### **Early Childhood Partnership Project:**

- The Early Childhood Partnership project is about the development of a collaborative partnership, across early childhood settings within the C4C region - to enhance and build links and collaboration across services and localities and to ultimately improve services and responses to children under 5, their parents and families. The group identified the importance and value of creating a collaborative partnership across their community and localities to provide opportunities for information exchange, pooling of knowledge, skills, resources and expertise in early childhood development, practices and procedures, and parent and community engagement.

#### **Let's Read (Inala to Goodna) Project**

- Let's Read – Inala to Goodna uses a community development approach to build a region wide awareness and commitment to early literacy and the importance of reading to children 0-5 years. The project also recognises and values traditional ways of promoting literacy within Indigenous and CALD communities. The foundation for the project is the delivery of Let's Read packs to families with children 0-5 years of age. By working in partnership with family networks, early childhood education services, schools, libraries, community services and local businesses the project aims to foster community ownership and long-term sustainability. Review of this activity has identified that distribution of kits will be undertaken in 2 phases for each locality with initial rollout acting as a baseline for the region.

**Links to other strategies** While this strategy links with all other strategies it particularly connects with the Strengthening Families Strategy particularly in relation to parent education activities and the community parent volunteer activity; the Child Friendly Communities Strategy given the importance of developing child safe training and education, and the Service Integration and Regional Partnerships Strategy, given its emphasis on coordinated, linked and integrated early childhood environments particularly in relation to the development of an early childhood –schools continuum and the Reading campaign which will use all activities within the Community Strategic Plan and Service Delivery Plan as a platform to action reading activities.

**Duration:** 2005 – 2009

**Target:** Children 0-5yr and families, early childhood services (centres, day care, playgroups, preschools, parent groups), community as a whole

## 4. Strategy: Creating Child Friendly Communities

### Priority area: Child Friendly Communities

**Outcomes:** Communities inclusive of all families & cultures, Improved community interest & capacity to own & respond to early childhood issues, Community members, its facilities & institutions work together to improve early childhood health & wellbeing

**Overview:** This strategy is an integrated, whole of region approach focusing on the development of a long term vision to build and assist the community's capacity to create a more child friendly region. The strategy is broad based and aims to engage and develop partnerships with community members, parents, children, community services, government services, business, service clubs, preschools/schools and early childhood settings to improve the quality of life for young children and families and create more child friendly environments. A number of actions will be developed based on the underpinning concept of the "Inala to Goodna Child Friendly Community Pathway" – as both a conceptual and physical link – connecting suburbs, individuals, groups and services across the region.

### Activities include:

**Child Friendly Awards** - Celebrating excellence and achievement in child friendly practices, promotion and environment.

**Working with business, services and government processes** (e.g. Council, Urban and Community Renewal), to promote the economic, social and cultural benefits of supporting children and families, and to improve and develop child-friendly spaces, facilities and services.

**Children's Views, Children's Voices** - Providing children in early childhood settings, and preschool/prep, opportunities to express their perceptions of what factors contribute to their feeling happy, secure, safe and loved (i.e. child friendly indicators), as an opportunity to consult with children and to present the results as part of a regional child friendly display.

**Innovative Community Initiatives Program** to provide opportunities for the resourcing of small scale community based child friendly projects which aim at building community capacity and support families and children.

**Building a Child Safe Community** – is about all sectors of community, government and business working together to create a safer, more child friendly community for children and families in the Inala to Goodna Region- building upon existing infrastructure and community safety and education programs. This project will work specifically with the Carole Park community as a pilot project – with a focus on children's' safety, home safety and community safety.

**Links to other strategies** This strategy links to all others and underpins all activities given the vision of the child friendly community pathway with all activities existing along the path. This strategy is complementary to the Regional Partnerships –Service Integration Strategy particularly in the development of coordinated and integrated approaches. The business engagement strategy will ensure that activities within the child friendly community strategy will build linkages to business for potential sponsorship and resourcing.

**Duration:** 2005 – 2009

**Target:** Children 0-5yr and families, community, government and business services, community as a whole.

## **5. Strategy: Regional Partnerships – Service Integration Strategy**

### **Priority area: Family & Children's Services work effectively as a system**

**Outcomes:** Improved coordination of services and institutions to support improvement in early childhood health, development and well-being

**Overview:** This is a strategy aimed at developing an integrated, co-ordinated continuum of government and community services, business, service clubs, preschools/schools, early childhood services, children, parents and families within the region. This strategy underpins all actions identified in the current Community Strategic Plan, by identifying and acknowledging the current capacity of the region to work effectively as a system, and to strengthen existing networks, partnerships and interagency forums.

#### **Activities include:**

##### **Regional Early Years Network**

- The Regional Early Years Network (R.E.Y.N) is an open forum for all stakeholders who support children 0-5 and their families to embrace collaboration and an integrated approach of service delivery in a strategic and transparent manner.

##### **C4C Committee to act as an open collaborative forum**

- for community members, business, government and non-government services to gain shared understandings, network, share information and to ensure the provision of an open and transparent process on the progress of the initiative, to the community. This will also include the documentation and recording of the C4C journey, learning's and outcomes.

##### **Community Investment Initiative**

- The Community Investment Initiative will be developed with the aim of leveraging support and sponsorship for C4C Initiatives. The C4C will aim to develop partnerships with Business, Government and Community as part of creating a model of sustainability for C4C activities and vision.

**Links to other strategies** As previously stated this strategy links with all others and is the underpinning strategy for all activities within this Community Strategic Plan and Service Delivery Plan given the focus of collaboration, partnership and integration across the region. This strategy also aims at leveraging financial and in kind support for all activities to ensure sustainable outcomes.

**Duration:** 2005 – 2009

**Target:** Children 0-5yr and families, community, government and business services, community as a whole.

**For further information or if you are interested in participating in Communities for Children please contact:-**

**Ph:** 07 3271 5607

**Mobile:** 0407 277 745

**Fax:** 07 3271 5493

**Email:** [chavesj@missionaustralia.com.au](mailto:chavesj@missionaustralia.com.au) or [c4cinalagoodna@missionaustralia.com.au](mailto:c4cinalagoodna@missionaustralia.com.au)

**Address:** Elorac Place, 11A Southampton Road, Carole Park Qld 4300

**Postal Address:** PO Box 142, Carole Park Qld 4300